



[www.CroftonFirst.com](http://www.CroftonFirst.com)

P.O. Box 3482 Crofton, MD 21114

### Our Mission:

- Nurturing relationships/partnerships with local businesses, organizations and elected officials
- Offering a platform for community members to voice concerns about the direction of growth and development around our community
- Highlighting the environmental, social, moral and community impact of large scale non-strategic development within the community
- Acting to protect the community from inappropriate development, threats to local businesses, and damage to natural resources



[www.CroftonFirst.com](http://www.CroftonFirst.com)

P.O. Box 3482 Crofton, MD 21114

## **A G E N D A**

**Intro and Agenda: Madonna Brennan ( 2 min)**

**Some technical highlights, questions, and what we are doing  
Tim Berkoff (5 min)**

**Panel of Speakers – 10 min each**

- 1. Fran Phillips, County Health Officer, AA Co Health**
- 2. Jay Sakai from MDE's Water Management Administration**
- 3. Rob Scrivener of Reliable/BBSS**
- 4. John Long from Constellation Energy**
- 5. Brad Heavener from Environment Maryland**

**Open Community Questions to the Panelists:**

**Madonna Brennan, Moderator**

## Some Highlights (information from PRRP report and other sources)

Fly-ash: Waste from combustion coal burning

1995: Fly ash dumping starts in “Turner” pit

June 1999: First signs of aquifer contamination above 500 mg/L permit limit for Sulfate

Nov 1999: Waugh Chapel report: “Model results show that peak sulfate concentration predicted to be about 245 mg/L or less at property boundary, occurring 32 years ...”

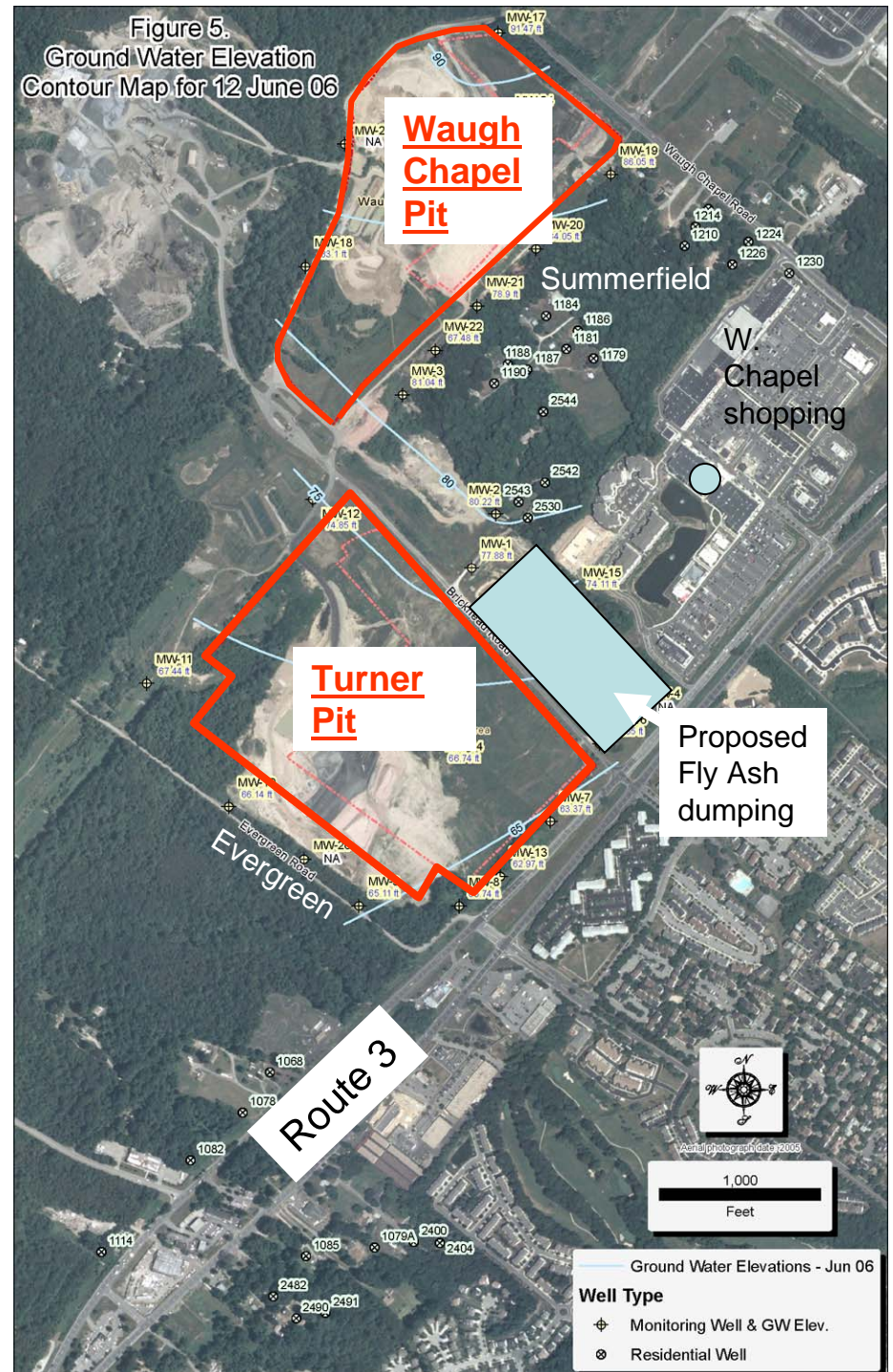
2000: Fly ash dumping starts in “Waugh Chapel” pit by 2002, > 500 mg/L Sulfate observed

2004: Turner pit remediation “pump and treat” system installed

Oct 2006: WC monitoring now show Sulfates up to 4,480 mg/L, bottled water being supplied to residents on Summerfield

Sept 2007: Fly-ash dumping temporarily stops. MDE still is negotiating with Constellation: “Consent Decree” considering new area for more fly-ash dumping

Summerfield residents are still waiting for public water



# Some obvious questions:

Why wasn't something done sooner for Summerfield residents?

What are the health impacts to those exposed?

Why was fly ash allowed to be dumped for years after initial issues developed?

Should Constellation Energy be allowed to dump more fly ash at the site?

A huge disconnect between reality and permit predictions by Constellation and their consultants:

Bad model assumptions?, bad hydrology/environmental input?, not enough field validation data?, unpredicted site conditions?, can hydrology models be trusted in these site-specific conditions?



DNR 12-6182007-221  
PPRP-142

# PPRP

Assessment of Water Quality Impacts  
Associated with Use of Coal Combustion Products  
as Structural Fill at the BBSS Site

June 2007

---

MARYLAND POWER PLANT  
RESEARCH PROGRAM

---

## Some Example issues from DNR consultant report, June 2007:

P16: “Although the Crofton Meadows pumping is from aquifers underlying the Magothy formation, ground water from the Magothy is being captured as a result of vertical leakage into the Patapsco.”

P 40: “Sulfate concentrations are elevated above background levels in ground water nearly 3,500 feet downgradient for the Waugh Chapel Pit.”

P46: “The leaching data and calculations indicate that the fly ash, if wet, will continue to leach sulfate and metals at concentrations above regional water quality for tens to hundreds of years.”

# What Can You Do?

**Please sign-up with us to receive fly-ash announcements**

**fill out Crofton First contact sheet**

**Consider volunteering to help!! There are a variety of things you can do**

## Crofton First Environment and Zoning Committee:

**Coordinator: Tim Berkoff Email: [CroftonFirstTim@yahoo.com](mailto:CroftonFirstTim@yahoo.com)**

- Documents observed so far are only summaries of data, do not show original lab results, chain of custody for samples, lab certifications, etc.
- Document retrieval and review: Intend retrieve all possible original data
- Toured site (courtesy of BBSS), requested all known water and soil testing
  
- Don't have to have a technical background if you want to help with research
- Professional consultants can be hired or other environmental groups can help too
- Everything we learn will help with other landfill cases – “all landfills eventually leak someday”, its important to be pro-active

## Action Team and Public Relations Committee:

**Coordinators: Madonna Brennan and Dick Lahn**

- How can we all (Crofton First, GCC, Evergreen Civic, Chamber, etc) work effectively together to represent our concerns and interests?
- Develop an Area-Wide Network of Citizens/organizations specifically for fly ash issue
- Event planning, future forums, special guest speakers, etc.