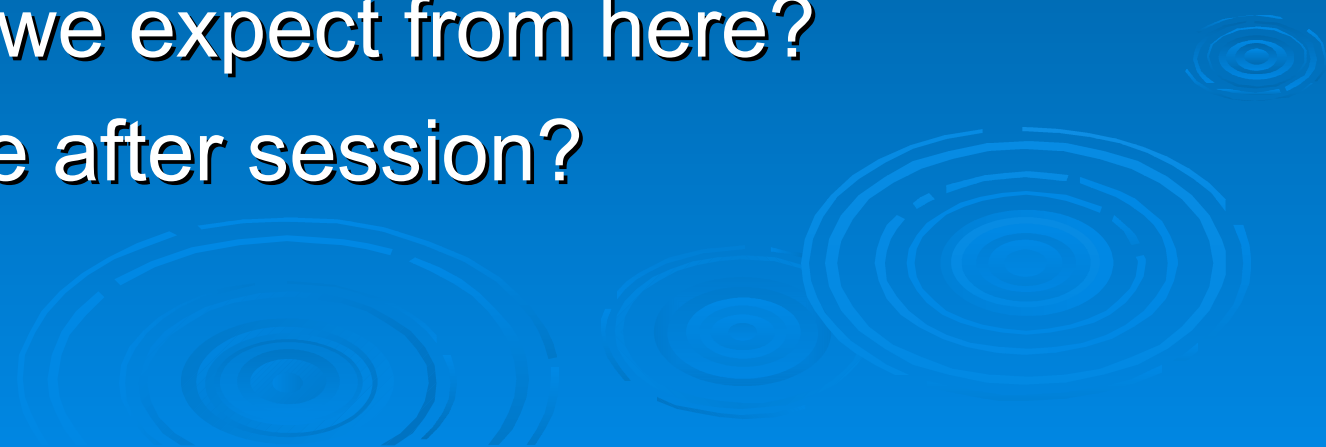


# Annapolis Update: Legislative Session 2009

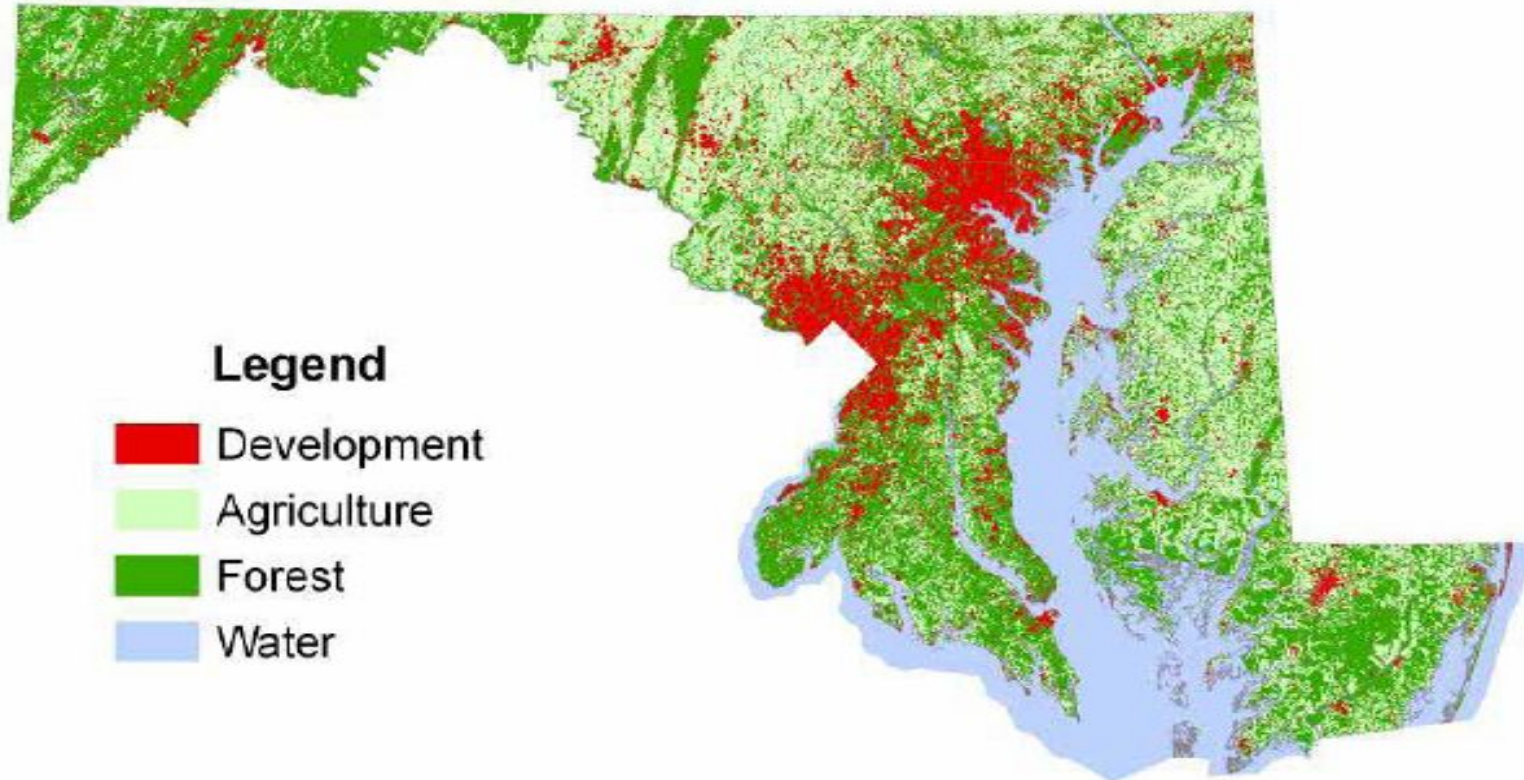
Jennifer Bevan-Dangel  
Deputy Director  
1000 Friends of Maryland



# Overview

- How have we been growing?
  - What has the State been doing?
  - How does session work?
  - What were the priorities?
  - Where are we now?
  - What can we expect from here?
  - Is there life after session?
- 

# 1973 Land Use / Land Cover for Maryland



## Legend

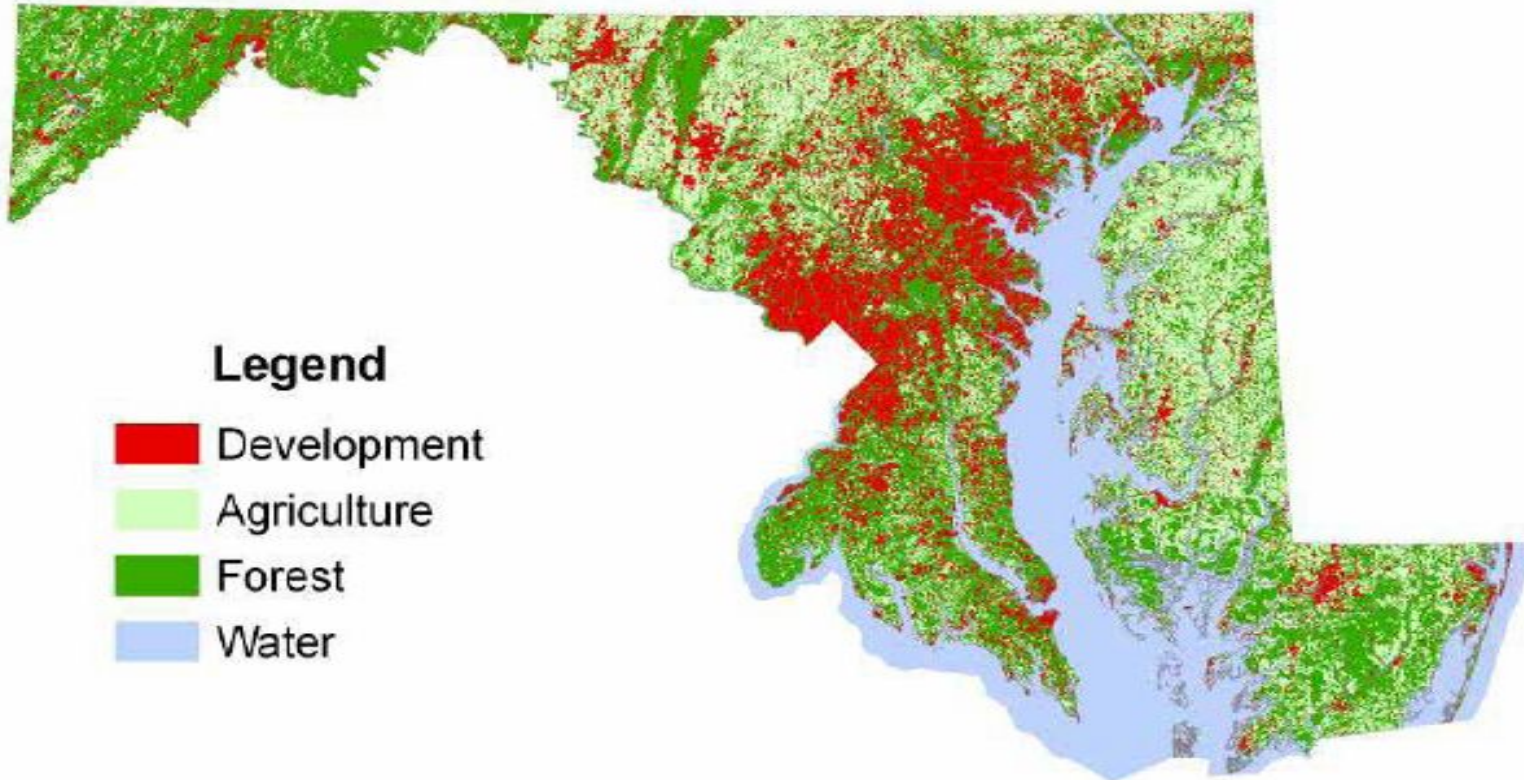
- Development
- Agriculture
- Forest
- Water

0 5 10 20 30 40  
Miles



**MDP**

# 2002 Land Use / Land Cover for Maryland



## Legend

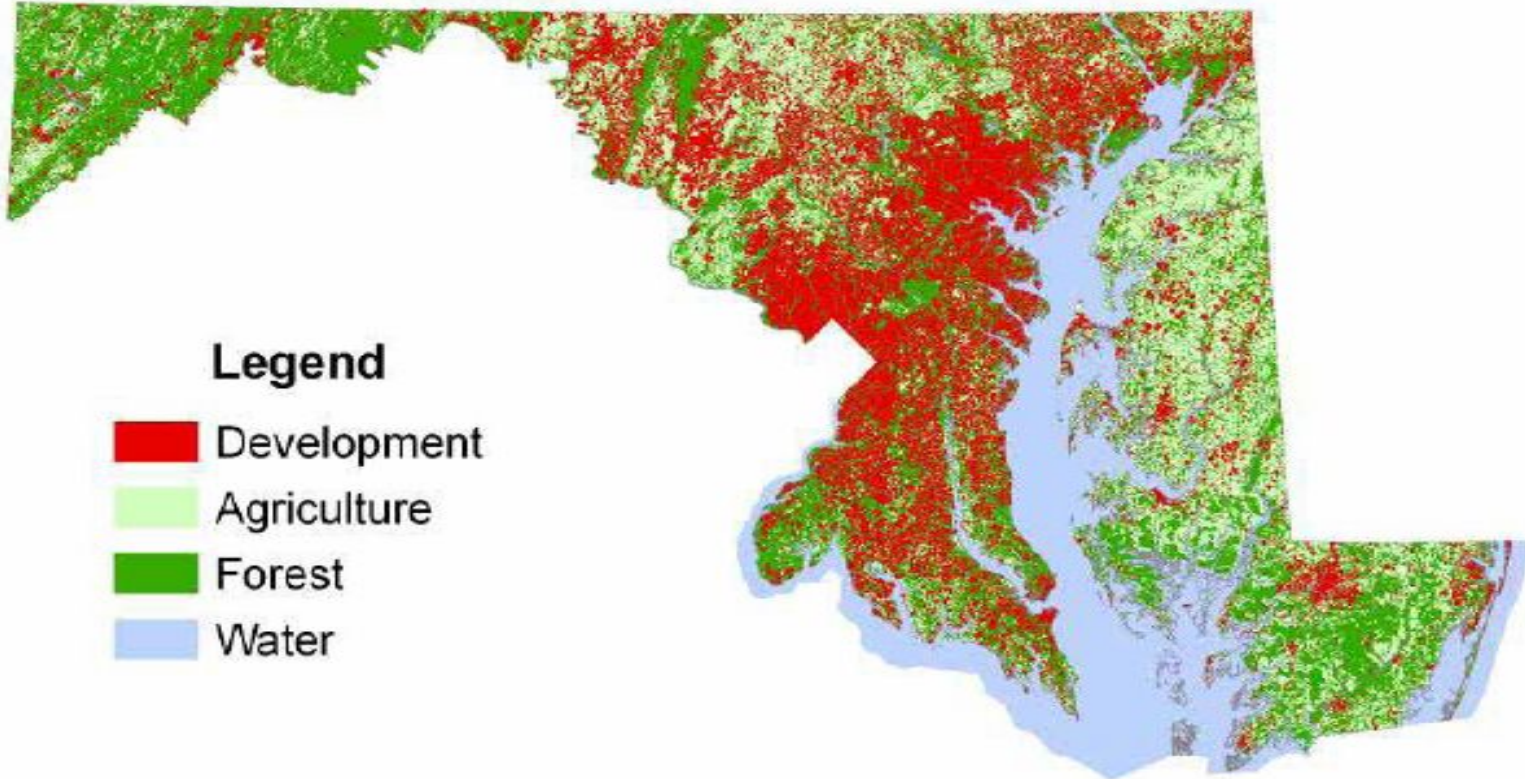
-  Development
-  Agriculture
-  Forest
-  Water

0 5 10 20 30 40  
Miles



**MDP**

# 2030 Land Use for Maryland Current Trends

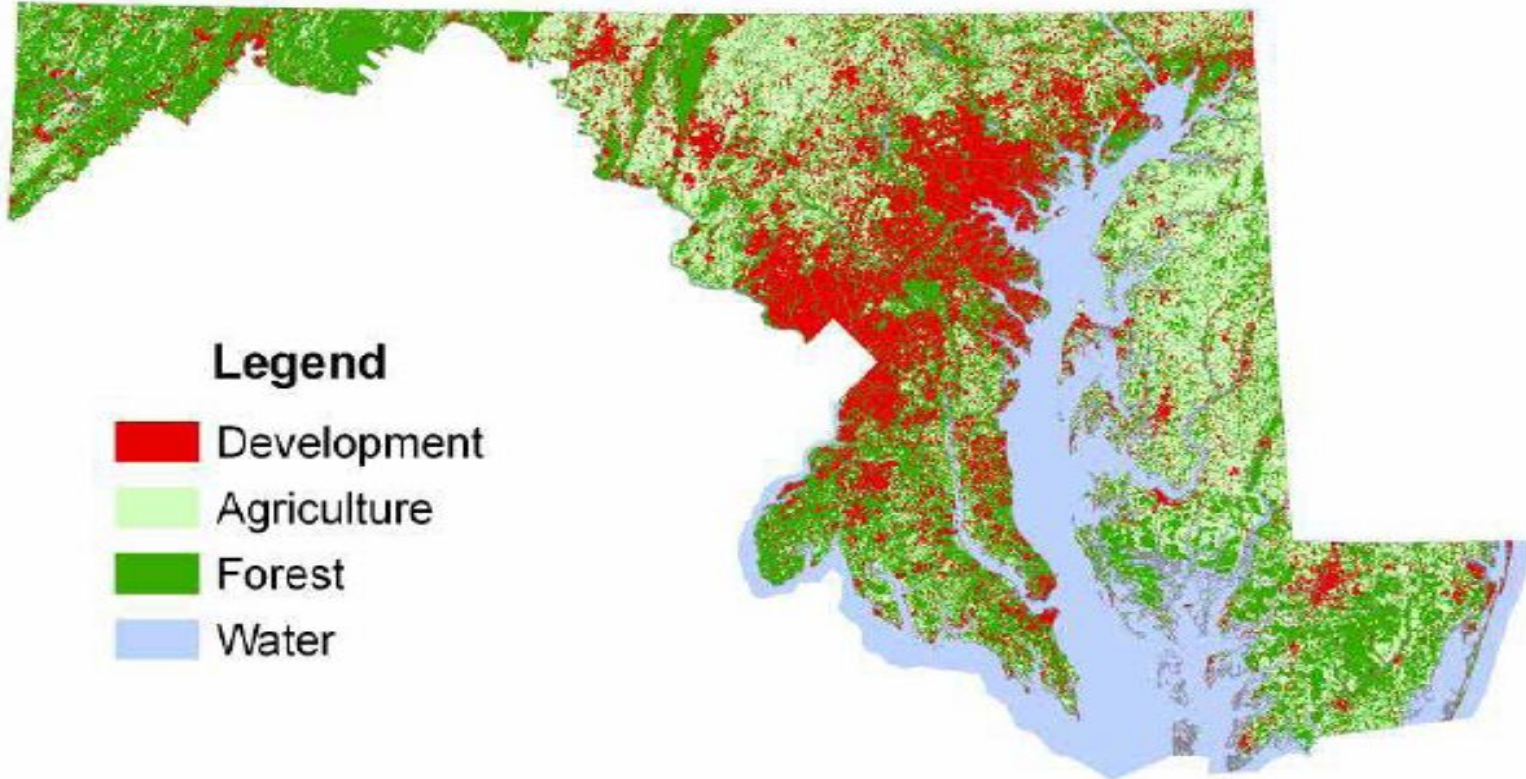


0 5 10 20 30 40  
Miles



**MDP**

# 2030 Land Use for Maryland Smart Growth Scenario



## Legend

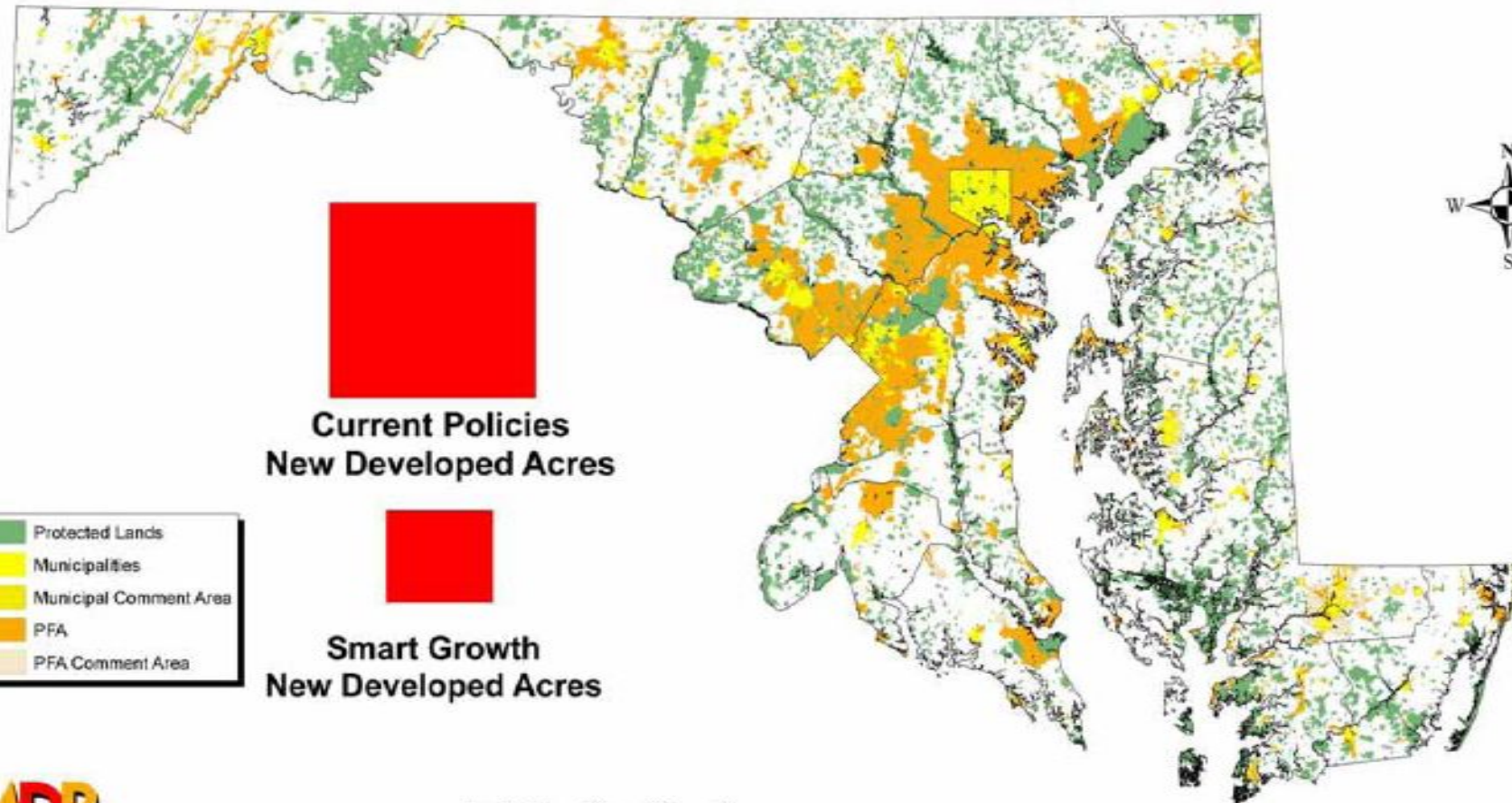
-  Development
-  Agriculture
-  Forest
-  Water

0 5 10 20 30 40  
Miles



**MDP**

# Maryland Priority Funding Areas / Protected Lands and New Potential Developed Acres by 2030

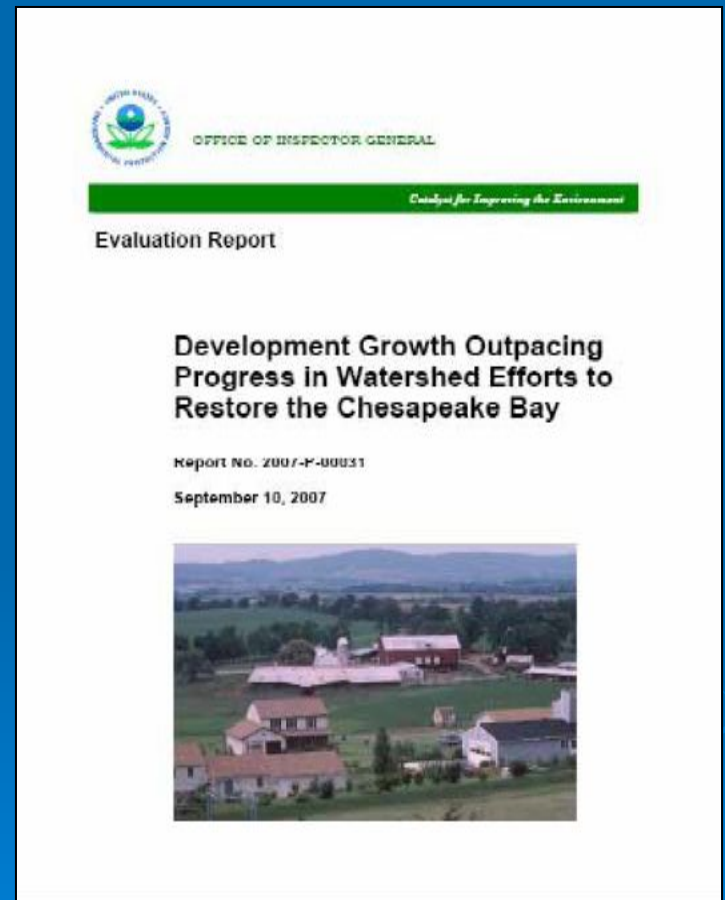


Created November 2007

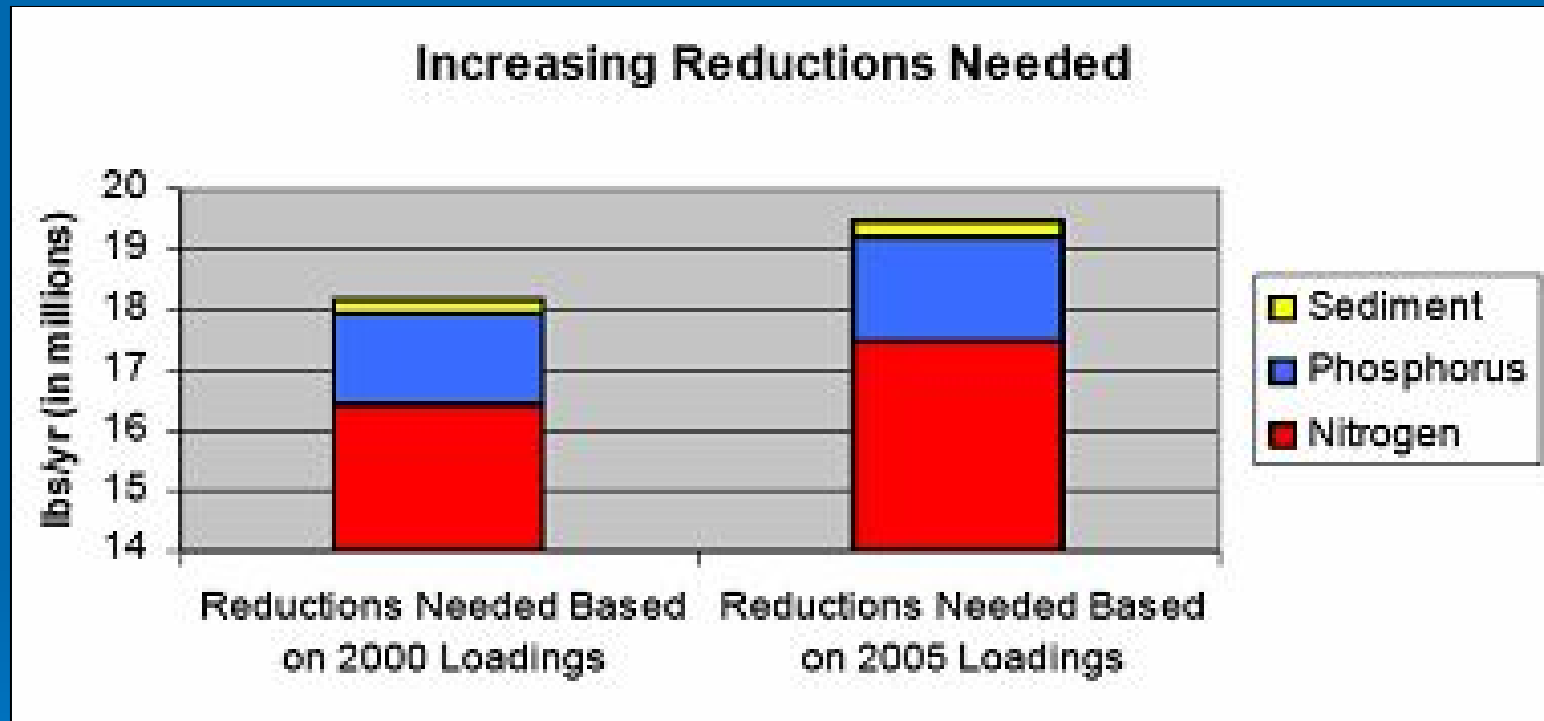
0 5 10 20 30 40  
Miles

# Growth and the Chesapeake Bay: One Step Forward and Two Steps Back

- Office of Inspector General for EPA concludes that new development is increasing nutrient and sediment loads at rates faster than restoration efforts are reducing them

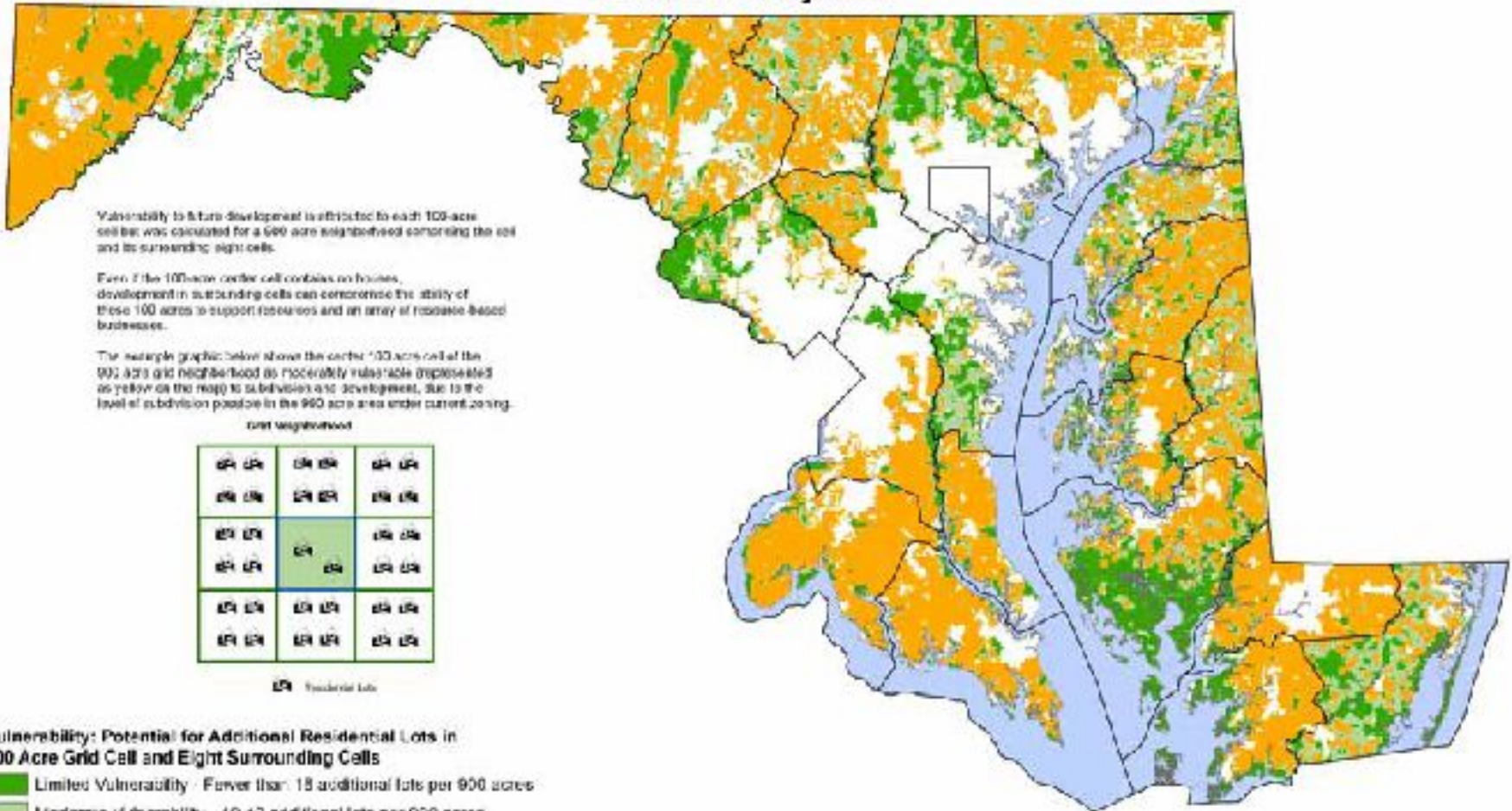


# More and More Work Needs to be Done Because of Developing Lands



Source: *Development Growth Outpacing Progress in Watershed Efforts to Restore the Bay*. Office of Inspector General, EPA. September 10, 2007. Report No. 2007-P-00031

# Vulnerability of Rural and Natural Resource Lands to Residential Development State of Maryland



Vulnerability to future development is attributed to each 100-acre cell but was calculated for a 600-acre neighborhood comprising the cell and its surrounding eight cells.

Even if the 100-acre center cell contains no houses, development in surrounding cells can compromise the ability of these 100 acres to support resources and an array of resource-based businesses.

The example graphic below shows the center 100-acre cell of the 900-acre grid neighborhood as moderately vulnerable (represented as yellow on the map) to subdivision and development, due to the level of subdivision possible in the 900-acre area under current zoning.

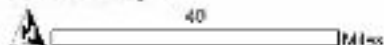
LR	LR	LR	LR
LR	LR	LR	LR
LR	LR	LR	LR
LR	LR	LR	LR

LR Residential Lots

### Vulnerability: Potential for Additional Residential Lots in 100 Acre Grid Cell and Eight Surrounding Cells

- Limited Vulnerability - Fewer than 18 additional lots per 900 acres
- Moderate Vulnerability - 19-40 additional lots per 900 acres
- High Vulnerability - More than 40 additional lots per 900 acres

Note: Up-to-date zoning and protected lands data is lacking for Calver County.



**MDP** Maryland Department of Planning  
November 2007  
Source data: Maryland Property, View 2006, MDP's Development, County Model, County Zoning Data, MDP Protected Lands Data, FPA Database

# Who's doing what?

- Local government: Anne Arundel is updating their General Development Plan.
- Federal: stimulus package, transportation bill, climate change legislation.
- State: SESSION!

# What Has the State Been Doing?

- New stormwater regulations
- Implementing energy efficiency efforts
- Critical area changes
- Bay stat, bay map, bay funds
- Task force on growth
- Commission on climate change
- Dwindling budget – cuts and more cuts

# What Can We Expect?

- Temper your expectations.
- Budget – the black hole in the room. Stimulus package helped but... March revenue estimates show more cuts must be made; another \$400 million from FY09 and at least \$513 from FY10.
- Watch the calendar –
  - ✓ Drop date – 2/6 in Senate, 2/13 in House
  - Cross-over date – 3/30
  - Budget pass date – 4/6
  - Sine Die – 4/13
- Death by fiscal note

# Priorities: Global Warming

- Greenhouse Gas Reduction Act (HB 315/SB 278)
  - Reduction goal of 25% by 2020; manufacturers held harmless
  - Moved through Senate with minimal amendments, 36-9
  - Voted out of House committee this week, on the floor today and into weekend

# Priorities: Growth

- Visions bill (SB273/HB294): moved through both chambers
- Terrapin Run fix (SB280/HB297): moved through House, moving through Senate
- Historic Tax Credit (SB258/HB309): stuck in House committee
- TOD funding expansion (SB274/HB300): unanimous vote on Senate floor, waiting on House committee
- Indicators bill (SB276/HB295): toughest vote as amended. On House and Senate floor this week.
- Performance Standards (SB 878, HB 1116): priority bill for the Smart and Fair Coalition; elements taken out and amended into Indicators bill (above)

# Priorities: InterCounty Connector

- SB 753/HB 27: Killed in House committee.
- BRFA (SB 166/HB 101) \$148 million in FY 2010 alone can be shifted to other transportation projects and programs (or free up bonding capacity). Cut FY09 down to nothing and decreased FY10, but life of project extended.
- Not being funded with stimulus dollars – that in itself is a positive.

# Priorities: Budget

- Budget (SB165, HB100); BRFA (SB166/HB101); Consolidated bond bill of 2009 (SB167/HB102)
- Bay Restoration Fund - \$50 mil (not \$73) for WWTP, \$1 mil (not \$6) for septics. \$10mil diverted from accumulated septics funds, given to cover crops.
- Bay Trust Fund – cut back to \$10 mil, \$21 mil diverted.
- Program Open Space (and related funds) - \$34 mil, down from \$101.7 mil but no real diversion.
- RGGI funds - \$35.5 mil shifted out of energy efficiency programs for two years.
- Agency funding – preliminary staff cuts alone are 6 at MDP, 13 at DNR, 8 at MDE
- Bills voted through second reader in House, Senate making cuts this week. Will need to be reconciled.

# Other Legislation

- Standing SB 1065/HB 1569
- VMT SB 539/HB 992
- EJ: Notice, SB 47/HB 1048; Mapping, SB 4/HB 1054
- Green Jobs: Welfare to Work SB 992/HB 268
- No Net Loss SB 666/HB 1291
- Stormwater Fee SB 672/HB 1457
- Prohibit private WWTP SB 721/HB 1105
- Green Buildings SB 625/HB 707
- Biofuels SB 555/HB 1379
- Organic Transition Program SB 516/HB 449
- Sustainable Forestry Act SB 549/HB 771

# Other Legislation: Continued

- POS Indoor/Outdoor Funding SB 163/HB 1564
- Reregulation SB 844/HB 1530; SB 795/HB 1312
- Deca Ban SB 184/HB 14
- Mercury Switch Removal HB 1263
- De-Nitrifying Septics SB 554/HB 176
- BRF for sewer hook-up SB 967/HB 1362
- Floating Vessel Platforms SB 465/HB 573
- Phosphorous in Fertilizer SB 553/HB 609
- Aquaculture SB 271/HB 312
- Bottle Bill Task Force SB 530/HB 248
- Monitoring costs HB 259 – passed 134-0 out of House
- Coal fees HB 1556 – heard 3/26

# For More Information

- Want weekly updates? Email [Jennifer@FriendsOfMD.org](mailto:Jennifer@FriendsOfMD.org) for bill and hearing updates.
- Sign up for action alerts – [www.mdicv.org](http://www.mdicv.org)
- Get groups or businesses you are affiliated to endorse any priority bill
- Meet with or contact your legislators and tell them you support the environmental priorities
- Email [Jennifer@FriendsOfMD.org](mailto:Jennifer@FriendsOfMD.org) for more information or contacts for any of these bills