

# General Development Plan - “GDP”

**Comprehensive plan to guide future development in the county**

**Broad in scope: Land-use, Environment,  
Resource protection, Infrastructure, Public Services,  
Fiscal impacts, etc.**

**10-20 year planning horizon**

**County website describes process, background reports,  
and public forums**

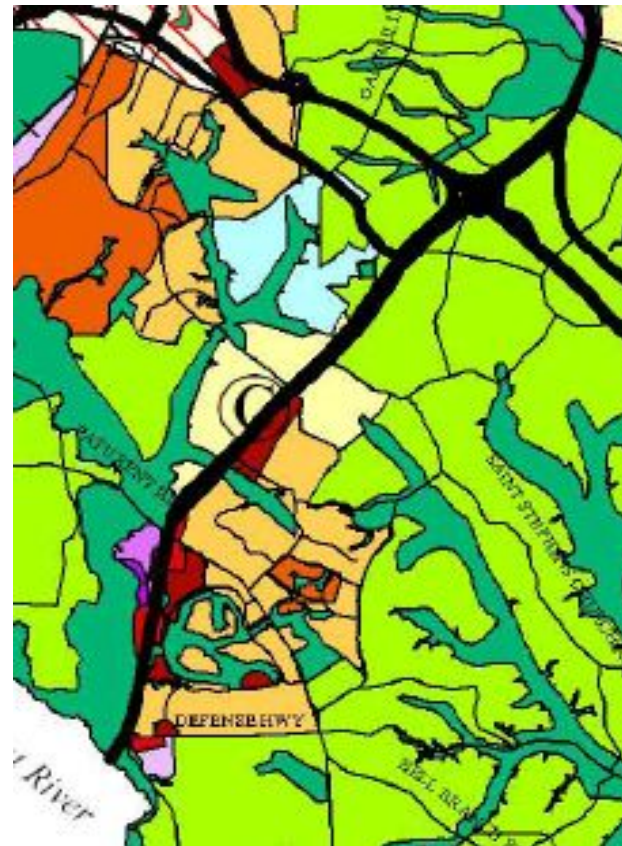
**GOTO: <http://www.aacounty.org/PlanZone/LongRange/GDP.cfm>**

**Check the website for latest information!!**

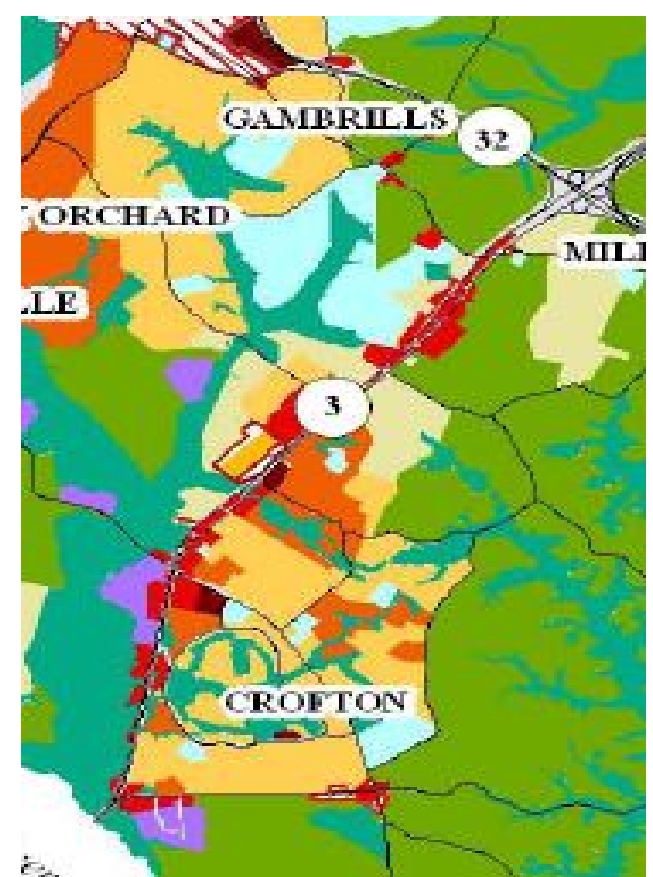
**Route 3: Many changes have occurred since the last GDP in 1997. Primarily rural planned in 1997, currently planned with “fragmented” commercial as the dominant use.**

## **ROUTE 3 segment**

**1997 Land-use Plan**



**2004 Land-use Plan**



### **Legend**

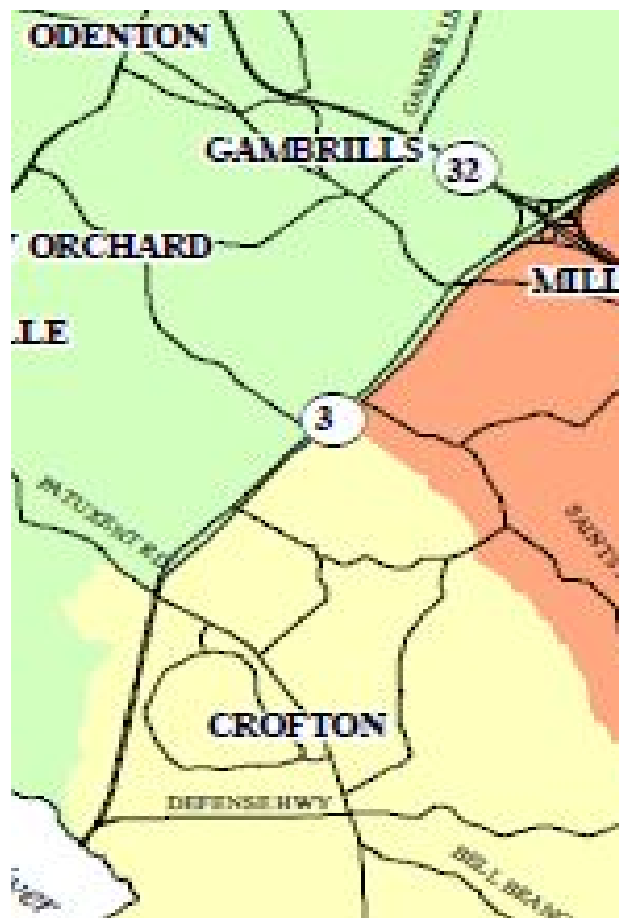
- RURAL
- RESIDENTIAL
  - Low
  - Low-Medium
  - Medium
  - High
- COMMERCIAL
  - Commercial
  - Commercial Revitalizati
- INDUSTRIAL
  - Light Industrial
  - Industrial Park

**Current GDP process and resultant zoning changes are an opportunity to change future growth on Route 3**

**Small Area Plans: Adopted since the last GDP (part of GDP), describe in detail land-use planning for 16 different areas in the county. The Route 3 corridor is bounded by three different plans: Crofton, Odenton, and Crownsville**

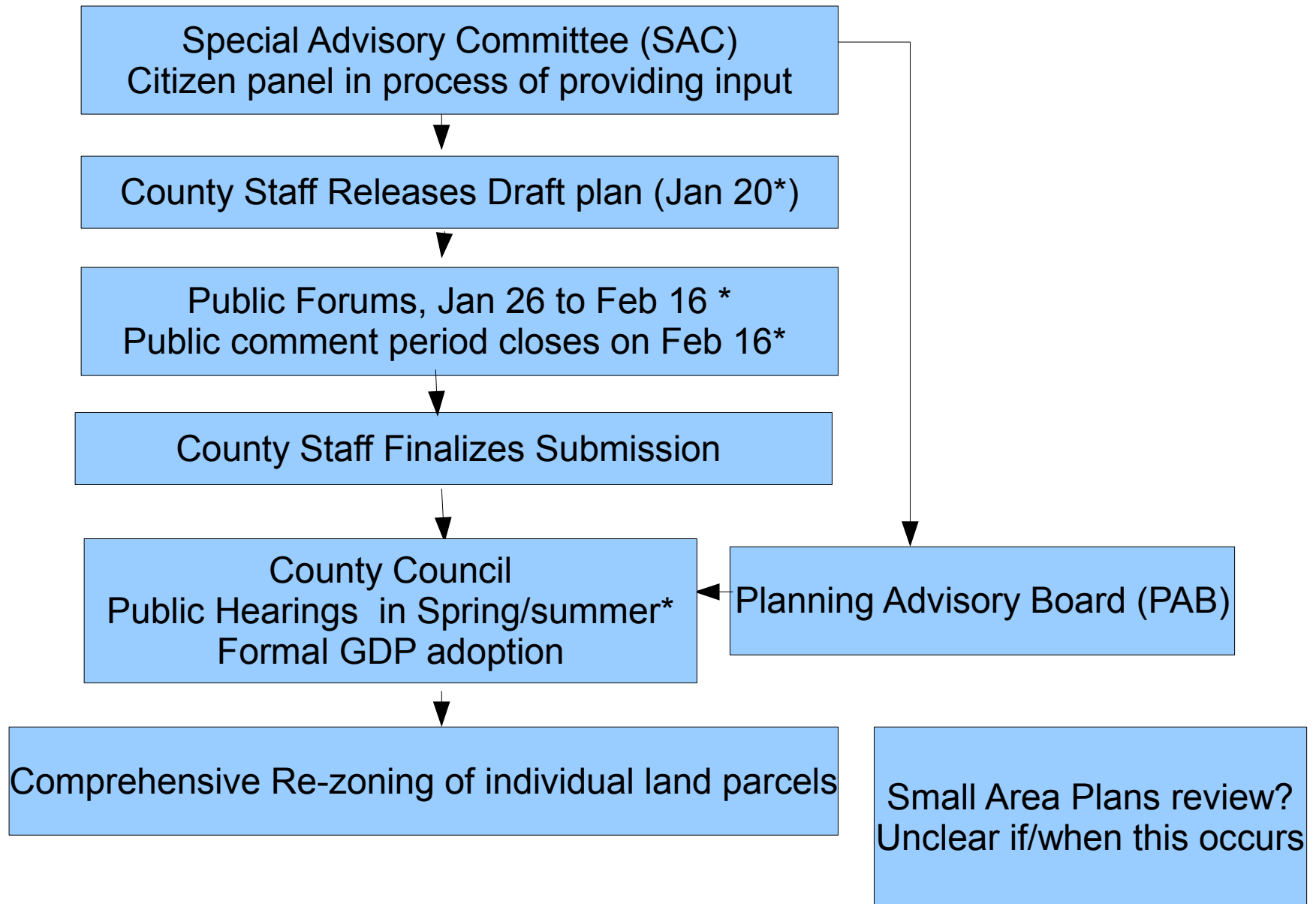
**Community Planning Areas**

- Annapolis Neck
- Broadneck
- Brooklyn Park
- Crofton
- Crownsville
- Deale/Shadyside
- Edgewater/Mayo
- Glen Burnie
- Jessup-Maryland City
- Lake Shore
- BWI/Linthicum
- Odenton
- Pasadena/Marley Neck
- Severn
- Severna Park
- South County



**Overall Route 3 corridor is difficult to understand and plan due to the multiple planning zones. Crofton First believes a system-wide approach is needed for Route 3 by implementing an additional planning zone specific for Route 3. No such mechanism is in place.**

# Based on county info, this is the GDP/rezoning process we understand for 2009



**\*check county website for update on times and locations**

What can you do?

Help promote smart-growth practices for Route 3:

Email

[CroftonFirstTim@yahoo.com](mailto:CroftonFirstTim@yahoo.com)

to sign-up for Crofton First action alerts for Route 3 GDP issues

Attend the county public forums and promote smart growth practices for Route 3

**GDP chapters**

Introduction

Overview of AA County

Balance Growth and Sustainability

Community Preservation and Enhancement

Environmental Stewardship

Quality Public Services

The Land Use Plan

Priority Preservation Areas

Transportation Plan

Water Resources Plan

Concurrency (Infrastructure)

Implementation

**[www.CroftonFirst.org](http://www.CroftonFirst.org)**